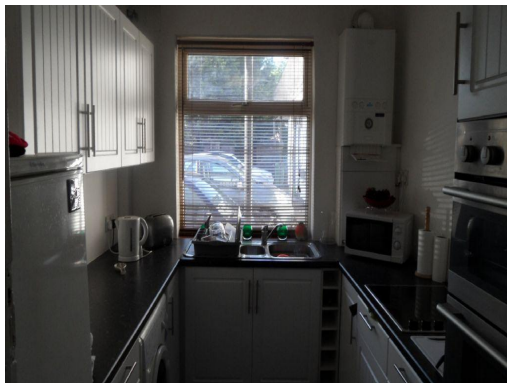




£825 pcm

**361 CROFT COURT, WALTON
ROAD, WEST MOLESEY KT8
2QQ**

Two bedroom ground floor maisonette situated close to local shops and amenities. The property comprises two bedrooms, living room, kitchen and bathroom. The property benefits from a garden, double glazing, gas central heating and parking.



- *TWO BEDROOMS**
- *UNFURNISHED**
- *GAS CENTRAL HEATING**
- *CLOSE TO LOCAL AMENITIES**
- *DOUBLE GLAZING**
- AVAILABLE IMMEDIATELY**

The Accommodation Comprises:
(measured with Disto Lite – variance
+/- 1.5’)

ENTRANCE HALL:

Coved ceiling and double radiator.

LIVING ROOM: 12' 8" x 11' 8"
(3.86m x 3.56m)

Coved ceiling and front aspect double glazed window. Double radiator. T.V.point.

KITCHEN: 8' 8" x 7' 6" (2.64m x 2.29m)

Rear aspect double glazed window and part tiled walls. Roll top worksurfaces with stainless steel sink unit with mixer taps. Range of eye and base level units. Fitted oven and grill and electric hob. Wall mounted central heating boiler.

BEDROOM ONE:

Coved ceiling and front aspect double glazed window. Double radiator and telephone point.

BEDROOM TWO: 8' 9" x 7' 9"
(2.67m x 2.36m)

Coved ceiling and rear aspect double glazed window. Double radiator.

BATHROOM:

Rear aspect double glazed window and small double radiator. Suite comprising of low level w.c, pedestal sink unit and panel enclosed bath with mixer tap. Shaving point.

PARKING:

Due to the Property Misdescriptions Act:

It is not our policy to test services, heating systems and domestic appliances and we therefore cannot verify that they are in working order. The buyer is advised to obtain verification from their solicitor or surveyor.

